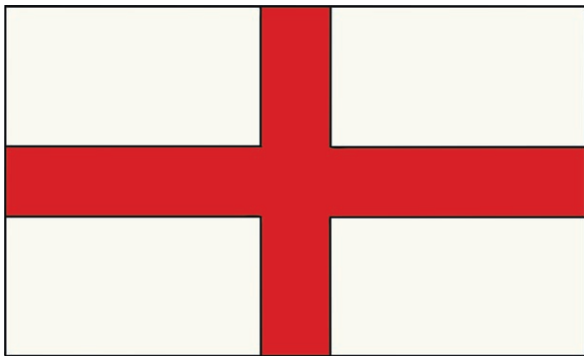


# St George's Day

## What Are Patron Saints?

- Patron saints are chosen to be special protectors for different areas of life. England, Ireland, Scotland and Wales each have their own patron saint. Each patron saint has their own day named after them.
- The patron saint of England is Saint George and St George's Day is celebrated on 23rd April every year. The symbol of Saint George is a red cross on a white background. This is also the flag of England and a part of the flag of Great Britain.



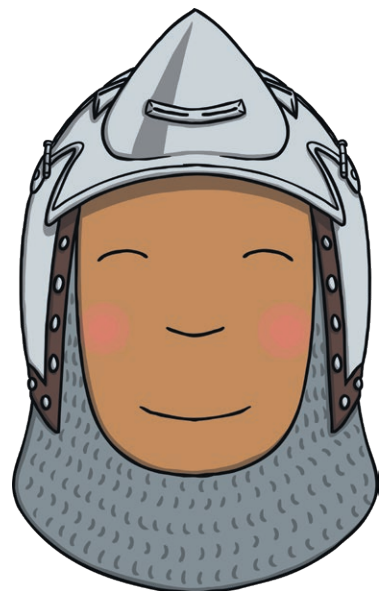
The symbol of Saint George is a red cross on a white background. This is also the flag of England and a part of the flag of Great Britain.

## What Is the Legend of Saint George?

- There is a famous legend about Saint George slaying a dragon to rescue a princess. This is probably the most famous story about him.
- Saint George arrived in a country called Libya and heard about a dragon that was terrorising the people. The dragon was killing young girls and the king was worried because his daughter was next. Saint George wanted to save the princess and fought the dragon, killing it and ending the danger.

## Who Was the Real Saint George?

- The real Saint George was actually a soldier. It is thought he was born in the year AD 270 in Cappadocia, which is now Eastern Turkey. He and his family were Christian and lived their lives following Christian values. When he was 17, he joined the Roman army. He was thought to be a very brave soldier.
- At that time, the emperor began to persecute Christian people and Saint George pleaded with the emperor to stop. People thought that Saint George was extremely brave because even though he was tortured, he refused to deny his faith.

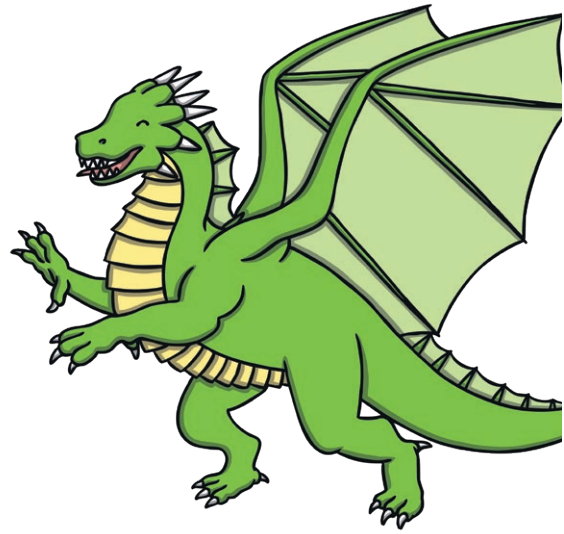


- Sadly, he was beheaded near Lydda in Palestine on 23rd April in AD303. The 23rd April was named St George's Day and became a national feast day in 1415.

### Interesting Facts

Saint Edmund the Martyr was the original patron saint of England. He was replaced by Saint George in the 14th century.

Saint George is also the patron saint of scouts, soldiers, archers and farmers. George.



### Celebrating St George's Day

Many people wear a red rose to recognise St George's Day. The red rose is the national flower of England.

In some parts of the country, there are festivals, where people dress up and stage 'dragon-slaying' events!

Many people do not celebrate St George's Day. There are a lot of people in England trying to get the day recognised as a national holiday.

# Questions

1. When is St George's Day celebrated in England?

---

---

2. What is a patron saint?

---

---

3. Who was the original patron saint of England?

---

---

4. Why is 23rd April named as St George's Day?

---

---

5. What do you think the word 'persecute' means?

---

---

6. Name two other patron saints' days that are celebrated as a national holidays in other countries

---

---

7. Why do people think that Saint George was a brave man?

---

---

8. Have you ever celebrated St George's Day? If so, what did you do?

---

---

# Answers

1. When is St George's Day celebrated in England?

**St George's Day is celebrated on the 23rd April.**

2. What is a patron saint?

**A patron saint is chosen to represent and protect a variety of different things**

3. Who was the original patron saint of England?

**Edmund the Martyr was originally the patron saint of England.**

4. Why is 23rd April named as St George's Day?

**23<sup>rd</sup> April was named as St George's Day because this was the day on which Saint George was beheaded.**

5. What do you think the word 'persecute' means?

**The word persecute means to treat someone badly because of their beliefs.**

6. Name two other patron saints' days that are celebrated as a national holidays in other countries

**Saint Andrew is the patron saint of Scotland and St Patrick is the patron saint of Ireland and they are both national holidays in their countries.**

7. Why do people think that Saint George was a brave man?

**Various possible answers, which may include that legend said he slayed a dragon, he fought for the Roman army, he wouldn't turn his back on his beliefs even though he was tortured.**

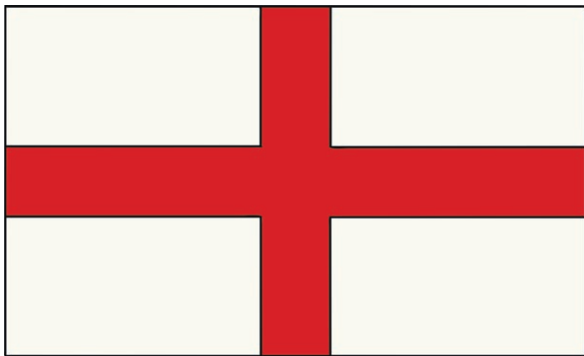
8. Have you ever celebrated St George's Day? If so, what did you do?

**Pupil's own answers.**

# St George's Day

## Patron Saints

Patron saints are chosen to be special protectors for different areas of life. There are many patron saints, who are guardians of lots of different things. England, Ireland, Scotland and Wales each have their own patron saint, who is guardian and protector of that nation. Each patron saint has their own day named after



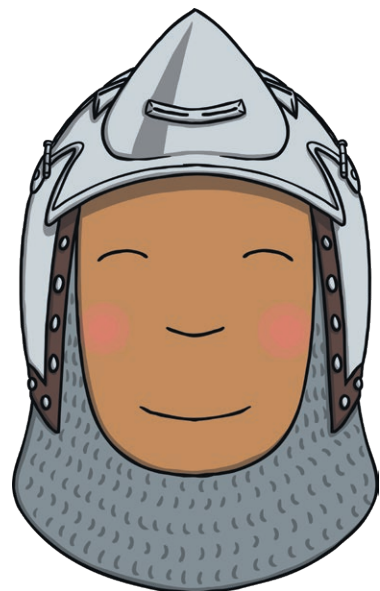
them. The patron saint of England is Saint George and St George's Day is celebrated on 23rd April every year. The symbol of Saint George is a red cross on a white background. This is also the flag of England and is a part of the flag of Great Britain. Saint George's symbol was adopted by Richard the Lionheart in the 12th century. The king's soldiers wore it on their tunics during battle.

## The Legend of Saint George

There is a famous legend about Saint George slaying a dragon to rescue a princess. This is probably the most famous story about Saint George. During the Middle Ages (5th - 15th century), dragons were often used to symbolise the devil. The story says that Saint George travelled around the world for many years until he came to a country called Libya. He met a man, who told him that the country was in danger from a dragon. The dragon was killing young girls and the King was worried because his daughter was next to be killed. According to the legend, Saint George wanted to save the princess and fought the dragon, slaying it and ending the danger.

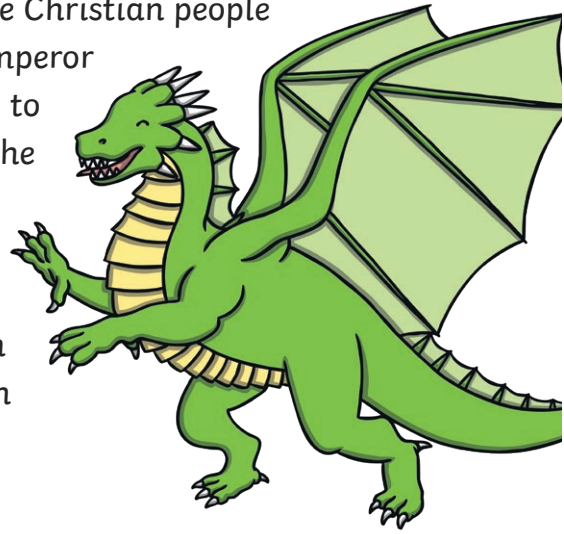
## Who Was the Real Saint George?

The real Saint George was actually a soldier. Although he is the patron saint of England and is connected with English values, he was not actually English. It is also thought that he may never have even visited England! He is thought to have been born in the year AD 270 in Cappadocia, which is now Eastern Turkey.



He and his family were Christian and lived their lives following Christian values. When he was 17, he joined the Roman army.

The emperor at the time began to persecute Christian people and Saint George often pleaded with the emperor to stop this persecution. He is considered to be extremely brave because even though he was tortured, he refused to deny his faith. Sadly, he was beheaded near Lydda in Palestine on 23rd April in AD303. The 23rd April was named St George's Day in 1222 and became a national feast day in 1415.



### **Celebrating St George's Day**

Many people wear a red rose, England's national flower, to recognise Saint George's Day.

In some parts of the country, there are festivals where people dress up and stage 'dragon-slaying' events! However, many people do not celebrate Saint George's Day - there are a lot of people trying to get the day recognised as a national holiday.

### **Interesting Facts**

Saint Edmund the Martyr was the original patron saint of England. He was replaced by Saint George in the 14th century.

Many patron saints' days are national holidays, for example, St Patrick's Day in Ireland and St Andrew's Day in Scotland. However in England, St George's Day is a normal working day.

Saint George is also the patron saint of scouts, soldiers, archers and farmers. There are church services for scout troops across the country on 23rd April to celebrate Saint George.

# Questions

1. What is a patron saint and why are they celebrated?

---

---

2. Why was Saint George put in prison?

---

---

3. Why is 23rd April named as St George's Day?

---

---

4. Why was the king of Libya worried?

---

---

5. Who was the original patron saint of England?

---

---

6. Why is it unusual that Saint George became the patron saint of England?

---

---

7. Why do you think this legend of Saint George slaying the Dragon has been created and told for centuries?

---

---

8. The emperor at the time was a pagan. What do you think this means and why

---

---

## Challenge

Can you find out which other things/places Saint George is patron saint of? There are a few!

# Answers

1. What is a patron saint and why are they celebrated?

**A patron saint is chosen to represent and protect a variety of different things.**

2. Why was Saint George put in prison?

**He was put in prison because he refused to deny his Christian faith even though the emperor was persecuting Christians.**

3. Why is 23rd April named as St George's Day?

**23<sup>rd</sup> April was named as Saint George's Day because this was the day in which Saint George was beheaded.**

4. Why was the king of Libya worried?

**The king of Libya was worried because a dragon was terrorising his country and he thought that the beast might kill his daughter.**

5. Who was the original patron saint of England?

**Edmund the Martyr was originally the patron saint of England.**

6. Why is it unusual that Saint George became the patron saint of England?

**This might be thought of as unusual as Saint George was not English and probably never even visited England**

7. Why do you think this legend of Saint George slaying the Dragon has been created and told for centuries?

**Various answers. Answers may discuss that this was a time when myths and legends were created. Also, the dragon was associated with the devil and as Saint George was a brave fighter this legend was created to symbolise and portray this bravery. Also, not much is known about the real Saint George so people created a legend to symbolise his bravery.**

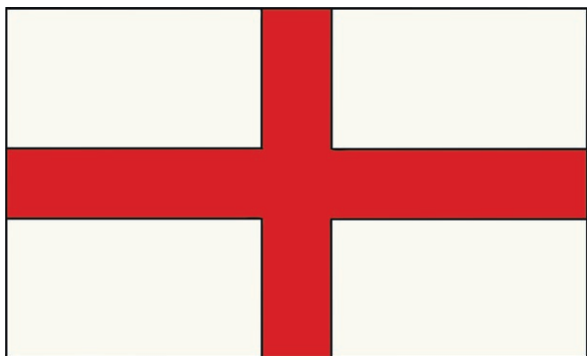
8. The emperor at the time was a pagan. What do you think this means and why

**A pagan is someone who does not believe in the main religions around the world. Many years ago, it meant non-Christian.**



# St George's Day

Patron saints are chosen to be special protectors for different areas of life. There are many patron saints for lots of different organisations, types of jobs and animals. Also, there are patron saints of whole nations. England, Ireland, Scotland and Wales each have their own patron saint, who is the guardian and protector of that nation. Each patron saint has their own celebratory day named after them. The patron saint of England is Saint George with St George's



Day being celebrated on 23rd April every year. Saint George's emblem is a red cross on a white background, which is also the flag of England, and a part of the flag of Great Britain. Saint George's emblem was adopted by Richard the Lionheart in the 12th century and was worn on the tunics of the king's soldiers during battle.

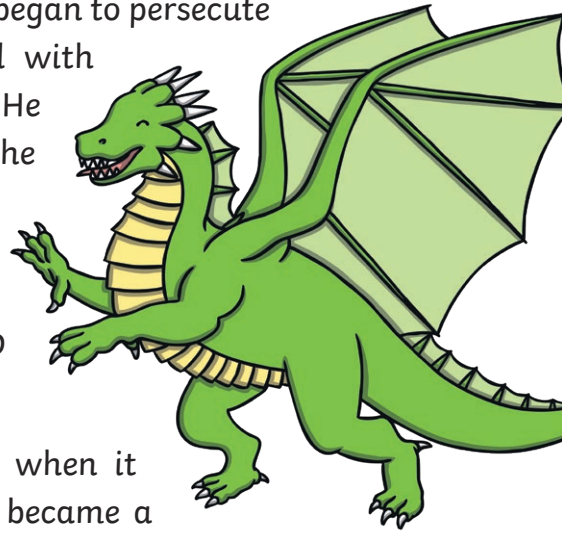
Legends tell of Saint George slaying a dragon to rescue a damsel in distress, which is probably the most famous story about him. During the Middle Ages (5th - 15th century), dragons were often used to represent the devil. The story says that Saint George travelled around the world for many years until he came to a country called Libya. There he met a hermit, who told him that the country was in danger from a dragon that was killing young girls. The king was looking for a knight to slay the dragon because his daughter, the princess, was the next to be killed. According to the legend, Saint George wanted to save the princess and fought the dragon, slaying it and ending the danger.

Although this legend is famous and often told, the real Saint George was actually a soldier and not much is really known about him. Despite the fact that he is associated with English values and bravery, he was not English, and it is widely thought that he never actually came to England! He is thought to have been born in the year AD 270 in Cappadocia, which is now Eastern Turkey. He was born to Christian parents and had a great Christian faith. At the age



of 17, he became a soldier in the Roman army and was soon very well-known for his bravery in battle.

The emperor at the time was a pagan and began to persecute Christian people. Saint George pleaded with the Emperor to stop this persecution. He is considered to be extremely heroic as he refused to deny his faith even though he was imprisoned and tortured by the Emperor and his men. Sadly, he was beheaded near Lydda in Palestine in AD 303 on 23rd April AD303.



That same day became St George's Day when it was declared in 23rd April in 1222 and became a national feast day in 1415.

### **Celebrating St George's Day**

Many people wear a red rose, England's national flower, to recognise St George's Day.

In some parts of the country, there are festivals where people dress up and stage 'dragon-slaying' events! However, many people do not celebrate St George's Day and there are a lot of people trying to get the day recognised as a national holiday in England.

### **Interesting Facts**

- Saint Edmund the Martyr was originally the patron saint of England and was replaced by Saint George in the 14th century.
- Many patron saints' days are national holidays, for example, St Patrick's Day in Ireland and St Andrew's Day in Scotland. However, in England, St George's Day is a normal working day.
- Saint George is also the patron saint of scouts, soldiers, archers and farmers. There are church services for scout troops across the country on 23rd April to celebrate Saint George's bravery and life.

# Questions

1. What is a patron saint and why are they celebrated?

---

---

2. What does the word 'emblem' mean?

---

---

3. Why was Saint George put in prison?

---

---

4. Why is 23rd April named as St George's Day?

---

---

5. Who was the original patron saint of England?

---

---

6. Why do you think Saint George was chosen to be the patron saint of England and why might this be considered unusual?

---

---

7. Why do you think that the legend of Saint George and the Dragon has been created and told for centuries?

---

---

8. The emperor at the time was a pagan. What do you think this means and why

---

---

9. Why do you think people would like St George's Day to be recognised as a national holiday?

---

---

10. How do you think St George's Day should be celebrated, based on what you now know about Saint George?

---

---

## Challenge

Can you find out which other things/places Saint George is patron saint of? There are a few!

# Answers

1. What is a patron saint and why are they celebrated?

**A patron saint is chosen to represent and protect a variety of different things. It could be an organisation, a type of job, animals or countries. They are celebrated as they are protectors and guardians.**

2. What does the word 'emblem' mean?

**An emblem is a symbol of something or someone. It is associated with that item or person and represents them.**

3. Why was Saint George put in prison?

**He was put in prison because he refused to deny his Christian faith even though the emperor was persecuting Christians.**

4. Why is 23rd April named as St George's Day?

**23<sup>rd</sup> April was named as St George's Day because this was the day on which Saint George was beheaded.**

5. Who was the original patron saint of England?

**Edmund the Martyr was originally the patron saint of England.**

6. Why do you think Saint George was chosen to be the patron saint of England and why might this be considered unusual?

**Various possible answers, e.g. it is unusual as he is not English. However, his values, such as bravery and heroism, are ones that England wanted to be associated with. Also, Richard the Lion Heart admired him and brought his emblem to England, which soldiers wore on their tunics so it became associated with England.**

7. Why do you think that the legend of Saint George and the Dragon has been created and told for centuries?

**Various answers. Answers may discuss that this was a time when myths and legends were created. Also, the dragon was associated with the devil and as Saint George was a brave fighter this legend was created to symbolise and portray this bravery. Also, not much is known about the real Saint George so people created a legend to symbolise his bravery.**

8. The emperor at the time was a pagan. What do you think this means and why  
**A pagan is someone who does not believe in the main religions around the world. Many years ago, it meant non-Christian.**
9. Why do you think people would like St George's Day to be recognised as a national holiday?  
**Various answers possible, which may discuss the fact that he is our national saint, and that Scotland and Ireland have national holidays for their patron saint and England doesn't.**
10. How do you think St George's Day should be celebrated, based on what you now know about Saint George?  
**Various answers referring to the text and their own personal opinions.**